

SPEECH SOUNDS DEVELOPMENTAL MILESTONES

Up to 2 years



- /b/, /p/, /m/ easiest sounds, front lips only move
- /d/, /h/ and /n/

BY 3 TO 3.6 years

- /k/ and /g/, slightly trickier as sounds are made at the back of the mouth

- /f/, /t/, /w/

By 4 years

- The child is able to say the following sounds in words - /p/, /b/, /m/, /n/, /t/, /d/, /k/, /g/, /f/, /s/, /y/, /h/
- Speech may be unclear to adults who don't know the child well

By 5 years



- The child is able to say the following sounds in words - /p/, /b/, /m/, /n/, /t/, /d/, /k/, /g/, /f/, /s/, /y/, /h/, 'sh', 'ch', 'j', /z/, /l/, /v/

- Speech should be mostly clear and easy to understand, but some immaturities noted

BY 6 years

- The child is able to say the following sounds in words - /r/, /v/ and r-blends e.g., /br/, /dr/, /fr/, /gr/, /kr/, /tr/
- l blends e.g., /fl/, /gl/ and /kl/

SPEECH SOUNDS DEVELOPMENTAL MILESTONES

By 7 years

/th/ sound is typically mastered

These norms are based on standardised assessments, GFTA, clinical resources and experience. It does not replace an assessment and should be used as a screener only.

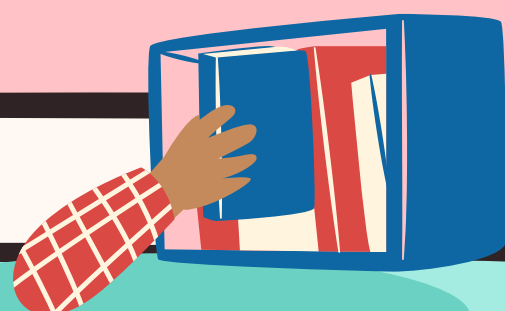
If concerned, book in for a full assessment.
The earlier sounds are treated, the better!

Speech sound errors

- Fronting; when sounds made at the back of the mouth are produced at the front e.g., /k/ to /t/
 - Stopping; when long sounds e.g., /s/ and /f/ are stopped to short sounds e.g., /s/ to /t/.
- Both typically resolved by 3;6 years

Speech sound errors

- Cluster reduction; when two or more consonants are reduced e.g., spoon is "poon", black is "back". Different blends can be mastered from 4;6 to 6 years
- Contact your Speech Therapist for more information



STRATEGIES TO PROMOTE CLEARER SPEECH SOUND

Modelling

Model correct speech sounds e.g., if they say "gra" for "grass", model "yes grass" emphasising the correct sound

Use a slower rate of speech

Visual Support

Encourage use of gestures, objects and pictures alongside speech



Emphasise

Sound out each syllable in a word

Check Hearing

If your child's hearing has not been tested since birth, review with an Audiologist

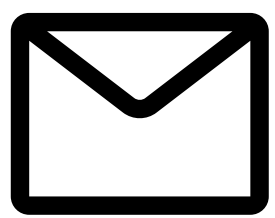


STILL CONCERNED? ✨ ✨ ANY FURTHER QUERIES? 🎯 🎯

Get in touch with us!



+65 9191 0385



info@telehope.sg



www.telehope.sg

